

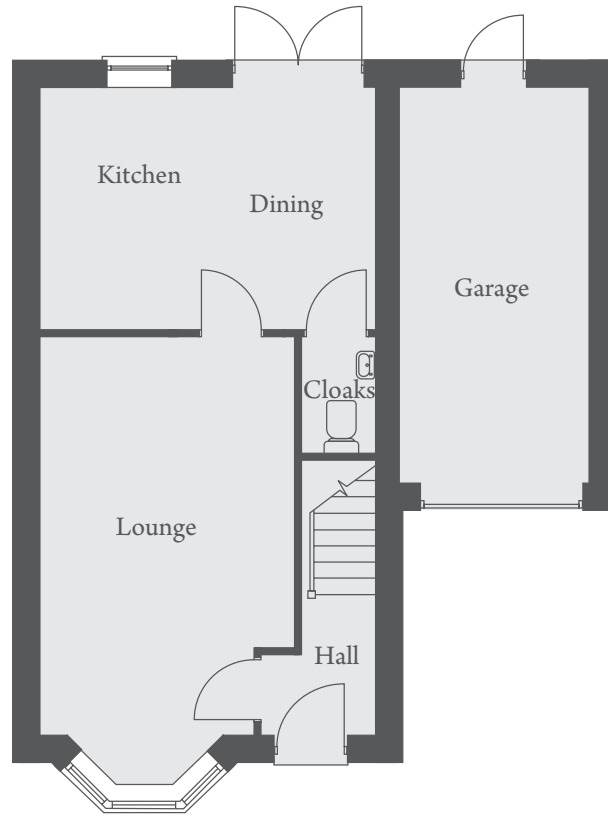
THE HARROP

FOUR BEDROOM HOME



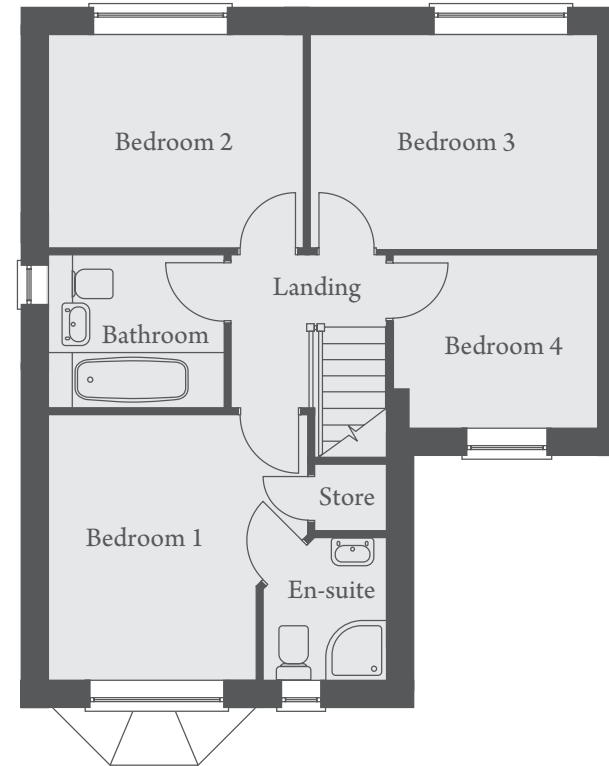
THE HARROP

FOUR BEDROOM HOME



GROUND FLOOR

Kitchen/Dining... 4690 x 3345mm 15'5" x 11'0"
Lounge 3545 x 5545mm 11'8" x 18'2"



FIRST FLOOR

Bedroom 1 2881 x 3719mm 9'5" x 12'2"
Bedroom 2 3560 x 2971mm 11'8" x 9'9"
Bedroom 3 3980 x 2971mm 13'1" x 9'9"
Bedroom 4 2870 x 2432mm 9'5" x 8'0"

Computer generated image shown overlaid. External finishes, landscaping and configuration may vary from plot to plot. Please refer to Sales Consultant for further details.
All dimensions are approximate and should not be used for carpet sizes, appliance spaces, or furniture. Furniture not to scale and all positions are indicative. We operate a policy of continuous improvement and individual features such as kitchen and bathroom layouts, doors, windows, garages and elevational treatments may vary from time to time. Consequently these particulars should be treated as general guidance only and do not constitute a contract, part of a contract or a warranty.