

THE CROMPTON

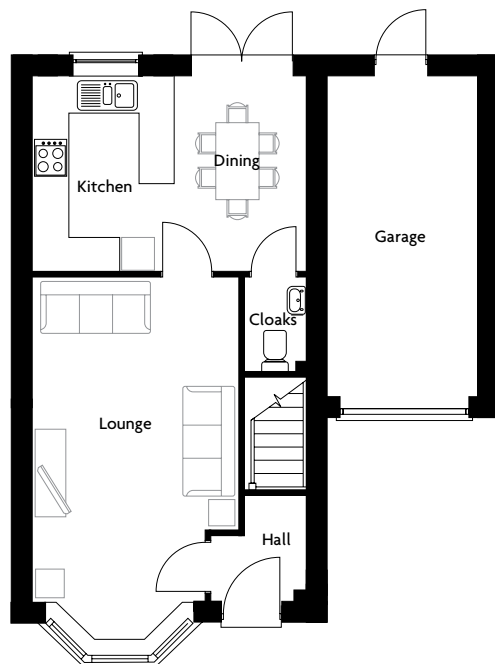
WIGGETT
• HOMES •



THE CROMPTON

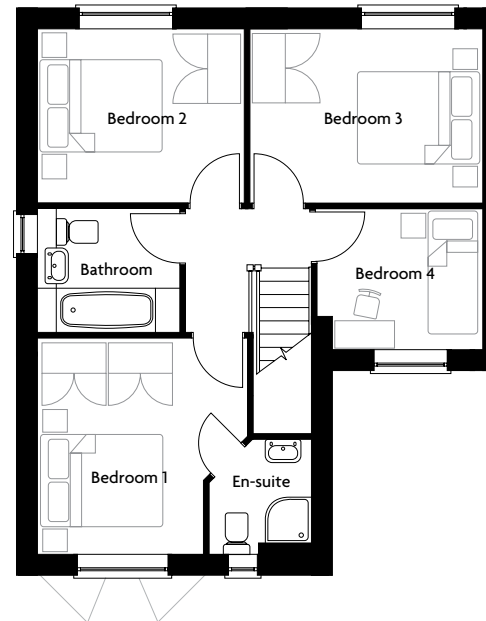
FOUR BEDROOM HOME

WIGGETT
• HOMES •



GROUND FLOOR

Kitchen/Dining4690 x 3345mm15'5" x 11'0"
Lounge3545 x 5545mm (excl bay)11'8" x 18'2" (excl bay)



FIRST FLOOR

Bedroom 13600 x 3719mm11'9" x 12'2"
Bedroom 23560 x 2971mm11'8" x 9'9"
Bedroom 33980 x 2971mm13'0" x 9'9"
Bedroom 42870 x 2432mm9'5" x 8'0"

Computer generated image shown overleaf. External finishes, landscaping and configuration may vary from plot to plot. Please refer to Sales Consultant for further details. All dimensions are approximate and should not be used for carpet sizes, appliance spaces, or furniture. Furniture not to scale and all positions are indicative. Wardrobes are shown to suggest position only, and are not included as standard unless otherwise stated. We operate a policy of continuous improvement and individual features such as kitchen and bathroom layouts, doors, windows, garages and elevational treatments may vary from time to time. Consequently these particulars should be treated as general guidance only and do not constitute a contract, part of a contract or a warranty.